

SOLUTION BRIEF

# Facing Sustainable IT Regulatory Requirements as Part of CSRD?

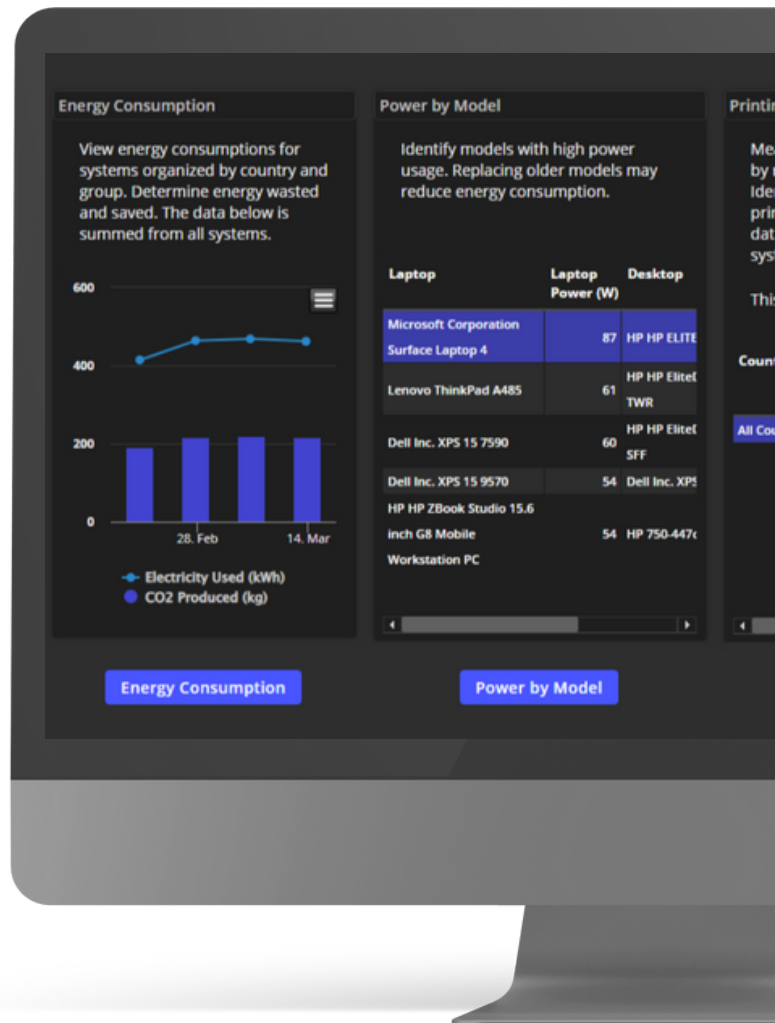
As enterprises commit to more sustainable operations as part of their business strategy, it is essential to consider the role that IT plays in achieving these goals. With regulatory requirements such as the Corporate Sustainability Reporting Directive (CSRD), a sustainable IT strategy no longer is nice to have; it is imperative. Given the prevalence of remote and hybrid work environments, enterprises now need a way to account for their vastly dispersed IT assets, including endpoint devices such as employee laptops, hand-held devices across manufacturing and warehousing, point-of-sale devices, and self-serve kiosks.

## The Challenge

The CSRD guidelines set forth a range of sustainability targets that have a direct impact on IT assets. These include reducing carbon footprint, using energy-efficient hardware, and optimizing e-waste management. Achieving these targets requires complete visibility across the IT estate to monitor and measure energy use with the goal of optimizing consumption and extending the asset life cycle – all without affecting the digital employee experience. Sustainable hardware lifecycle management includes promoting a longer lifespan for hardware through regular maintenance and updates.

## The Solution

As an extension of the [Lakeside SysTrack platform](#), the Lakeside Green IT DEX pack puts sustainability at the forefront of business strategy through digital employee experience data. The pack uses physical performance data of personal computers and other endpoint devices to help IT identify opportunities to reduce energy consumption, paper waste, and IT costs.



Lakeside's Green IT DEX pack helps organizations reduce their carbon footprint through technology performance, usage, and planning. The pack provides deep insights into energy consumption, printing waste, power usage, and device performance throughout the IT estate while highlighting opportunities to reduce energy consumption and, where possible, extend the life of hardware assets. Having this visibility means IT leaders can leverage real employee endpoint data to inform need-based hardware purchases and sustainable hardware lifecycle planning.

With the Green IT DEX pack, Lakeside helps businesses translate digital employee experience data into transformative sustainability initiatives to:

- Identify opportunities to reduce energy consumption
- Differentiate your footprint across persona, geography, and device type
- Reduce paper waste and printing costs
- Extend the lifecycle of hardware assets such as laptops
- Optimize hardware purchases based on needs, not refresh times
- Educate the business on sustainable technology practices

Aligning IT practices with sustainability is not just about meeting regulatory requirements. It's about embracing a business model that values our planet and its resources. The Corporate Sustainability Report Directive, other sustainability regulations, and ESG initiatives are not hurdles; instead, they are opportunities to foster an environment that benefits businesses, consumers, and our planet.



If you have any further questions please contact a Lakeside sales representative at [salesinfo@lakesidesoftware.com](mailto:salesinfo@lakesidesoftware.com)

### About Lakeside

Lakeside Software is how organizations with large, complex IT environments can finally get visibility across their entire digital estate and see how to do more with less. For far too long, IT teams have struggled to see what's going on in their dark estate – where costly inefficiencies, poor employee experiences, and unresolved problems hide. Only Lakeside lets you give everyone a better view, so they can see the hidden issues, see the smartest fixes, and see the biggest savings. That's why so many of the world's leading global brands rely on Lakeside. And it's how our customers see an average ROI of more than 250%. Lakeside. Give everyone a better view.™